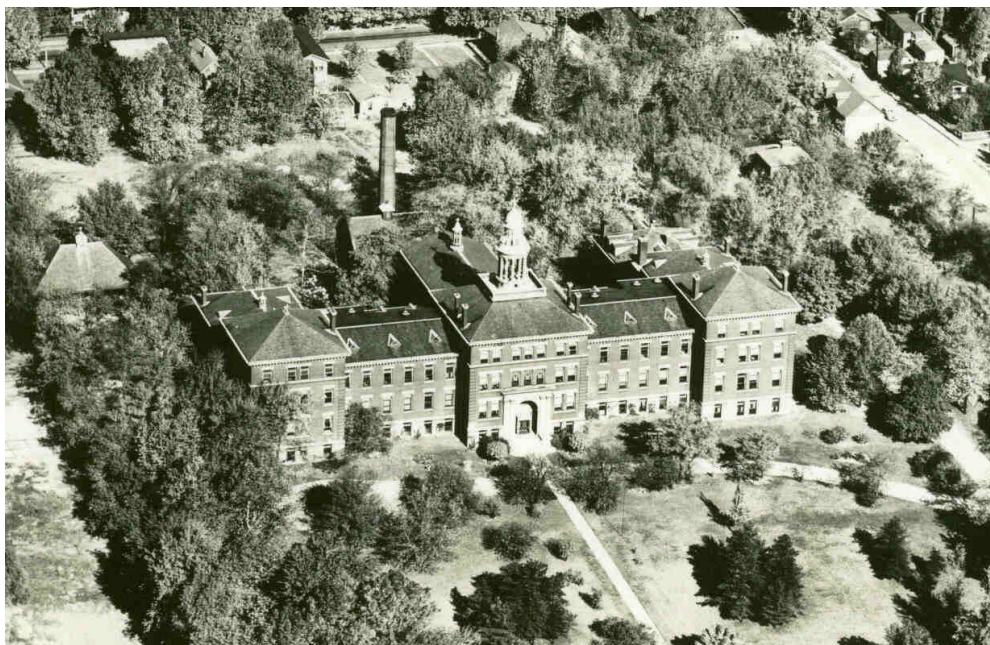


St. Louis, MO – St. Mary's Orphanage

Archives of the Daughters of Charity, Province of St. Louise

2026



Creator:	St. Mary's Orphanage
Title:	St. Louis, MO – St. Mary's Orphanage
Dates:	1843-1949
Extent:	3 Boxes, 1 linear foot
Identification:	WC-SMOSLMO
Language:	English
Subjects:	St. Mary's Asylum/Home, St. Louis Catholic history--History Daughters of Charity of St. Vincent de Paul Daughters of Charity of St. Vincent de Paul--United States Orphanages Orphan asylums Social service agencies Social service--Religious aspects--Catholic Church Social service--Missouri

Historical Note

St. Mary's Asylum began on May 1, 1843 thanks to the donations of Mrs. Ann Biddle, daughter of St. Louis businessman and philanthropist John Mullanphy. The asylum was intended for the maintenance and education of orphans, half

orphans, homeless, and destitute children. In 1952 the diocese turned it over to the School Sisters of Notre Dame to use for children needing special education.

Scope and Contents

Manuscripts, Reports, History, Correspondence, Financial, Publications, Photos

System of Arrangement

Arranged in 11 series: 1) Administration, 2) History, 3) Correspondence, 4) Financial, 5) Legal, 6) Publications, 7) Newspaper clippings, 8) Audio-visual, 9) Programs, 10) Personnel, 13) Closing of Mission

Conditions Governing Access

Some intake records for staff use only.

Conditions Governing Reproduction and Use

Permission for any type of publication of archival materials, including text, photographs, video, or audio must be secured from the Daughters of Charity Communications Director before publication. Contact archives staff for appropriate forms and contact information.

Custodial History

Formerly part of the Archives of the Daughters of Charity, West Central Province, St. Louis, MO

Immediate Source of Acquisition

Transferred to Daughters of Charity, Province of St. Louise during provincial merger of 2011

Preferred Citation Format

Document/File Name, RG #, Collection Name, Daughters of Charity Archives, Province of St. Louise, Emmitsburg, MD

Inventory

RG 11-4-1 - series - Administration
Box 1 Folder 1 - file - Register of children admitted to the orphanage - 1843-1900

Box 2 Folder 1 - file - Register of children admitted to the orphanage - 1843-1876
Box 2 Folder 2 - file - Reports June 1895-Aug 1897. Also report of children sent from
Juvenile Court June 1905-Sept 1911 - 1895-1911
Box 2 Folder 3 - file - Survey Reports - 1948-1950
Box 2 Folder 4 - file - Census Report - 1900

RG 11-4-2 - series - History

Box 2 Folder 5 - file - The History of St. Mary's Home for Girls in St. Louis, Missouri,
1843-1948, by Emma Theresa Liebig, B.S.
Box 2 Folder 6 - file - History-Typed compilation of letters and notes
Box 2 Folder 7 - file - History-Handwritten report
Box 2 Folder 8 - file - History-General
Box 2 Folder 9 - file - History-St. Joseph's Boys Orphan Asylum

RG 11-4-3 - series - Correspondence

Box 2 Folder 10 - file - Correspondence - 1843-1900

RG 11-4-4 - series - Financial

Box 3 Folder 1 - file - Cash book - 1843-1880
Box 3 Folder 2 - file - Income and expense register - 1843-1886
Box 3 Folder 3 - file - Cash and expense register - 1852-1905
Box 3 Folder 4 - file - Financial reports and statistics - 1880-1946

RG 11-4-5 - series - Legal

Box 3 Folder 5 - file - Copy of wills-Mary M. Kane, Matilda Brewer

RG 11-4-6 - series - Publications

Box 3 Folder 6 - file - Newsletters
Box 3 Folder 7 - file - Brochures

RG 11-4-7 - series - Newspaper clippings

Box 3 Folder 8 - file - Newspaper clippings

RG 11-4-8 - series - Audio-visual

Box 3 Folder 9 - file - Photographs

RG 11-4-9 - series - Programs

Box 3 Folder 10 - file - Programs of various events

RG 11-4-10 - series - Personnel

Box 3 Folder 11 - file - Personnel-Sisters

RG 11-4-13 - series - Closing of Mission

Box 3 Folder 12 - file - Closing documents-correspondence, news items